

**FOR SUBLEASE**

# 15 DARTMOUTH ROAD, SUITE 301 BEDFORD, NOVA SCOTIA

Furnished space for sublease in  
Bedford's sought after Wardour Centre



**Geof Ralph**

- 📞 (902) 444-4004
- 📠 (902) 877-9324
- ✉️ geof@partnersglobal.com

[partnersglobal.com](http://partnersglobal.com)



## Furnished space for sublease in Bedford's sought after Wardour Centre

Well located minutes from downtown Bedford, as well as Burnside Industrial Park, Wardour Centre is a desirable professional building with established tenants and historically low vacancy. The building boasts modern fixtures & finishes, as well as an attractive exterior and ample on-site parking.

Consisting of just over 1,600 sq. ft. , Suite 301 has an excellent layout consisting of an open concept reception/work area, boardroom and four private offices (one of which is currently being used as a break room). The space is flooded with natural light and is offered fully furnished with modern, gently used furniture.

Available immediately, for sublease until May 31, 2025. Contact the listing agent for more information!



1,618 sq. ft.  
for Sublease

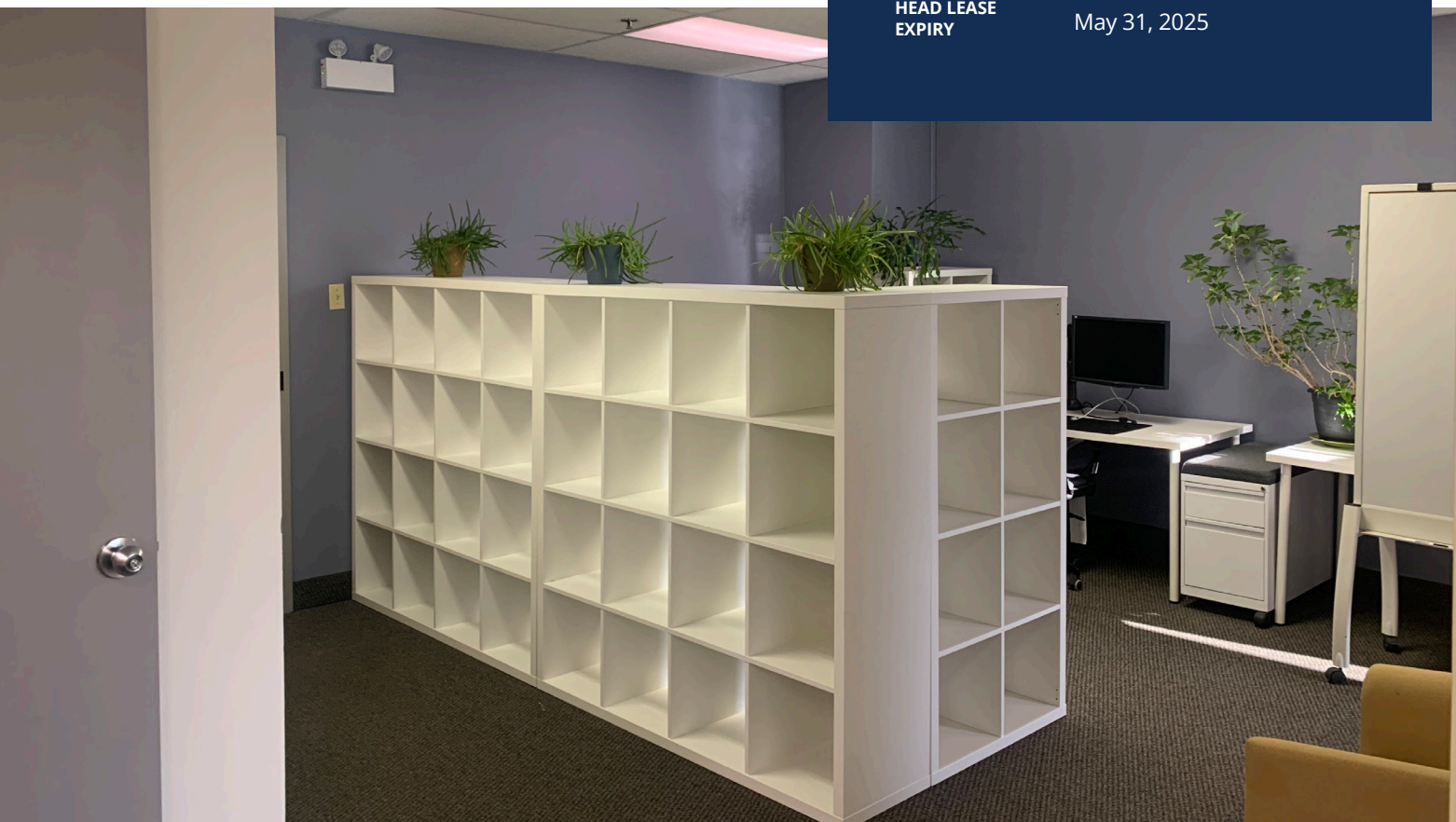


Fully  
Furnished

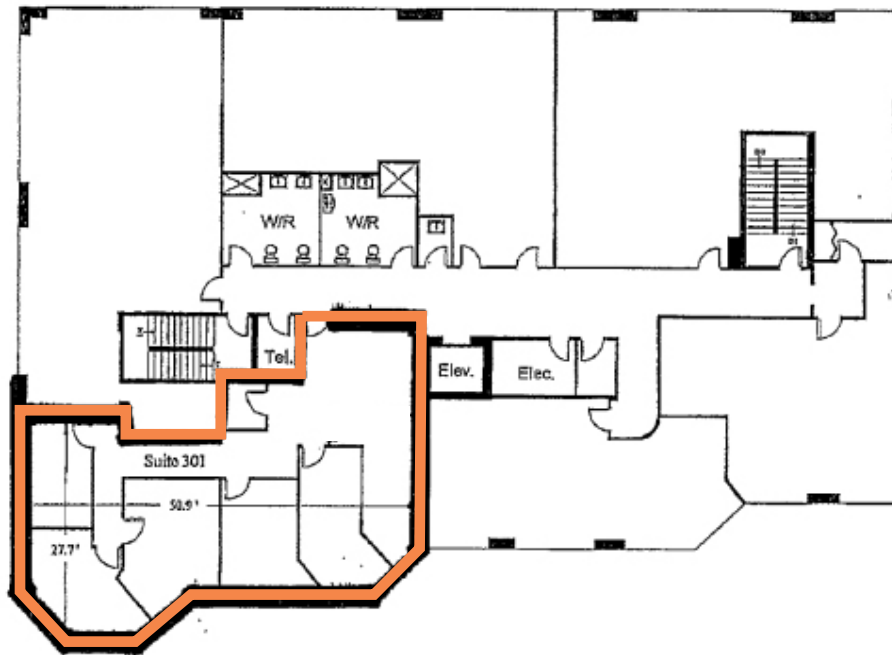


Ample On-site  
Parking

LISTING ID	10348
ADDRESS	15 Dartmouth Road
LOCATION	Bedford
PROPERTY TYPE	Office
BUILDING NAME	Wardour Centre
BUILDING SIZE	32,000 sq. ft.
SIZE AVAILABLE	1,618 sq. ft.
FLOOR LOCATION	3 <sup>rd</sup> (top floor)
AVAILABILITY	Immediately
PARKING	Ample on-site surface parking
BASE RENT	\$9.00 psf
ADDITIONAL RENT	\$14.75 psf
HEAD LEASE EXPIRY	May 31, 2025



Floor Plan

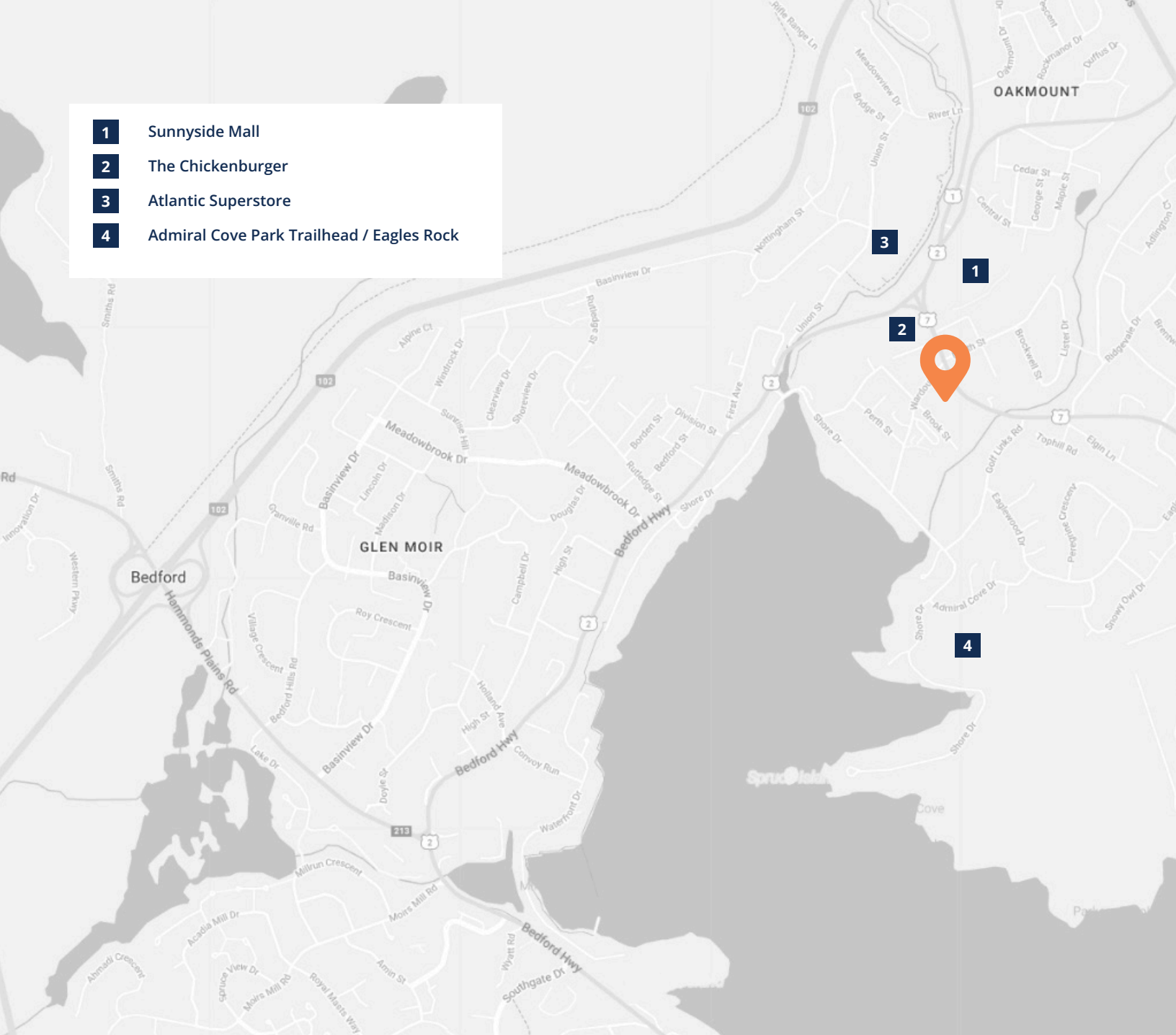








- 1 Sunnyside Mall
- 2 The Chickenburger
- 3 Atlantic Superstore
- 4 Admiral Cove Park Trailhead / Eagles Rock



**Geof Ralph**

- 📞 (902) 444-4004
- 📠 (902) 877-9324
- ✉️ geof@partnersglobal.com

[partnersglobal.com](http://partnersglobal.com)

Partners Global Corporate Real Estate (Partners Global) and its agents and affiliates do not warrant, represent or guarantee the accuracy, completeness or validity of the information provided herein. Parties interested in the property are to conduct their own independent investigations to determine the suitability of the property for their intended use and are strongly urged to discuss the property with their professional advisors. Partners Global expressly disclaims any liability arising out of any errors and omissions in the information. Prospective clients should not confine themselves to the contents but should make their own enquiries to satisfy themselves in all respects. Partners Global will not accept any responsibility should any details prove to be incomplete or incorrect.

