

FOR SUBLEASE

SUITE 215, PARK PLACE III

237 BROWNLOW AVENUE, DARTMOUTH

**Fully Furnished Office Sublet in
City of Lakes Business Park**



Geof Ralph

- ☎ (902) 444-4004
- 📠 (902) 877-9324
- ✉ geof@partnersglobal.com

partnersglobal.com

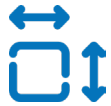


SUITE 215, PARK PLACE III | 237 BROWNLOW AVENUE, DARTMOUTH, NS

Fully-Furnished Office Sublet in the City of Lakes Business Park

This stylish and bright office space located in the City of Lakes Business Park offers 3,240 square feet, comprised of a reception area, kitchenette, open and enclosed meeting spaces, boardroom, workstation space, and storage. Features include elevator access, ample on-site surface parking, plenty of natural light, and the option to include all existing furniture.

Building amenities at Park Place III include a modern atrium lobby with free Wi-Fi and collaborative space, a coffee shop, and bike racks. In addition, tenants of Park Place's Corporate Campus have access to the amenities at the nearby Delta Hotel by Marriott Dartmouth, including its fitness centre and meeting spaces.



3,240 sq. ft.
of Space

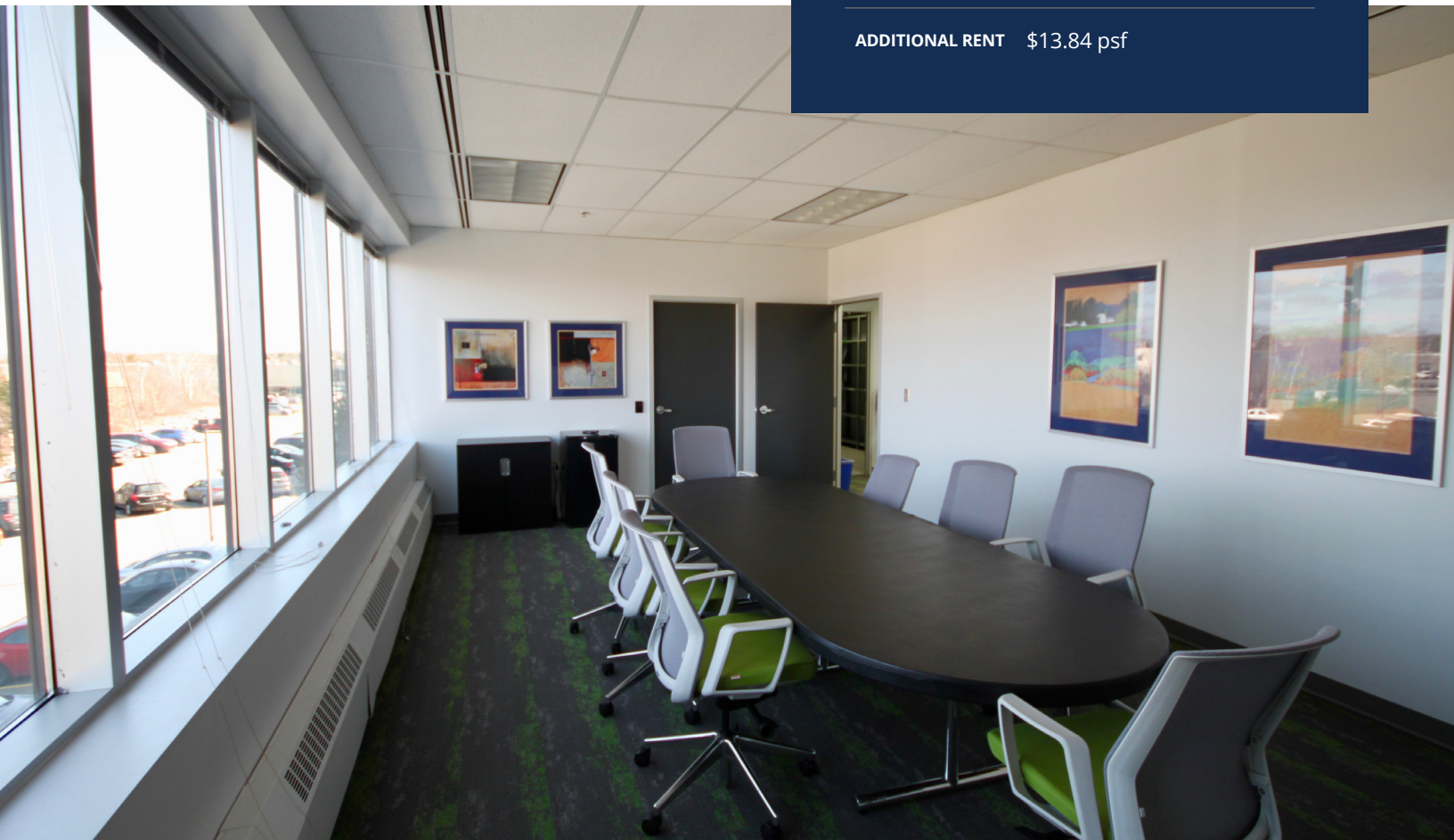


Convenient
Location



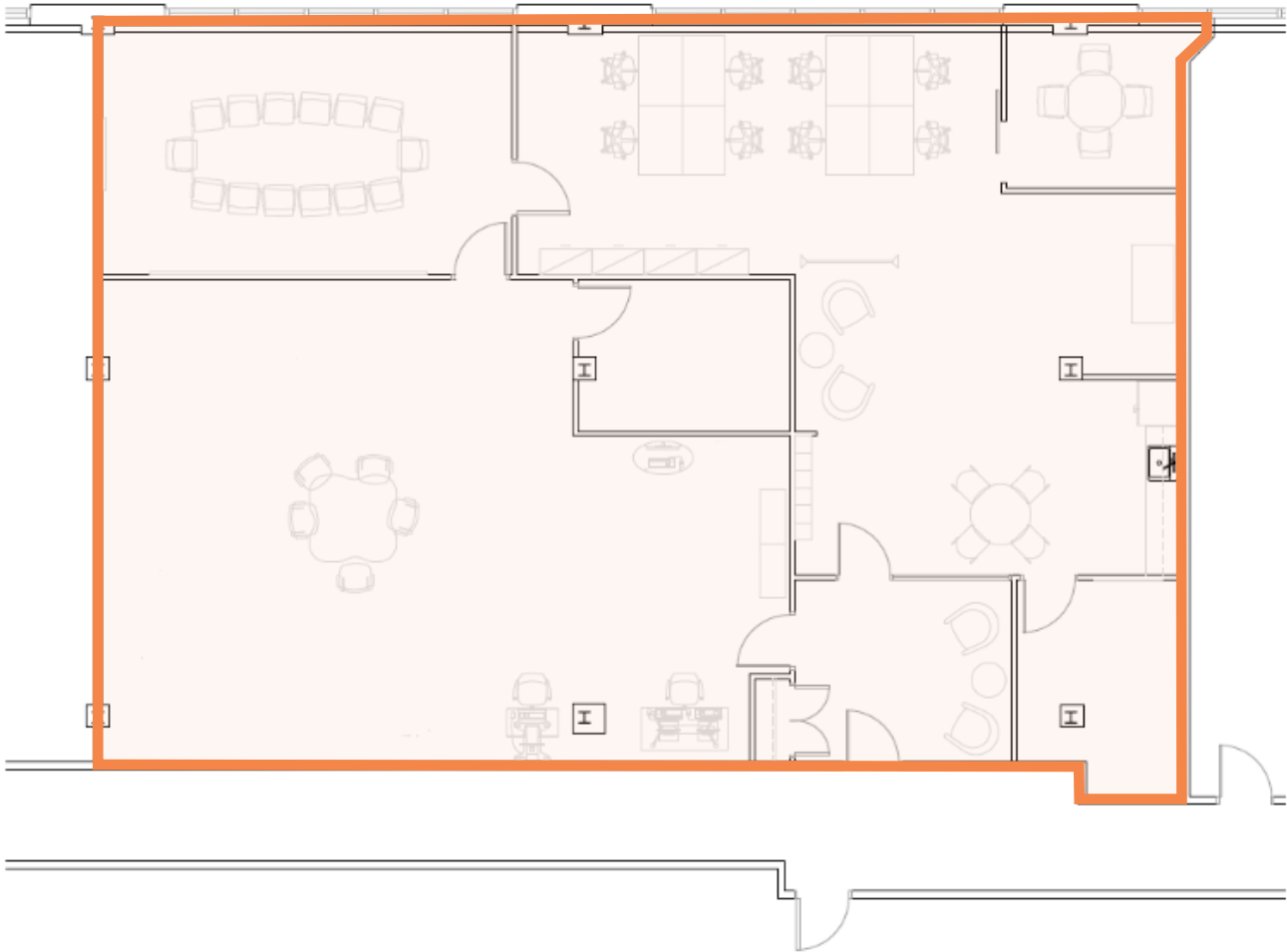
Available
Furnished

| | |
|-------------------|--|
| LISTING ID | 10404 |
| ADDRESS | Suite 215, 237 Brownlow Avenue |
| LOCATION | City of Lakes Business Park Dartmouth, NS |
| PROPERTY TYPE | Office |
| BUILDING NAME | Park Place III |
| BUILDING SIZE | 75,830 sq. ft. |
| SIZE AVAILABLE | 3,240 sq. ft. |
| FLOOR LOCATION | Second |
| PARKING | 12 surface stalls |
| HEAD LEASE EXPIRY | November 30th, 2026 |
| NET RENT | Contact listing agent for details |
| ADDITIONAL RENT | \$13.84 psf |

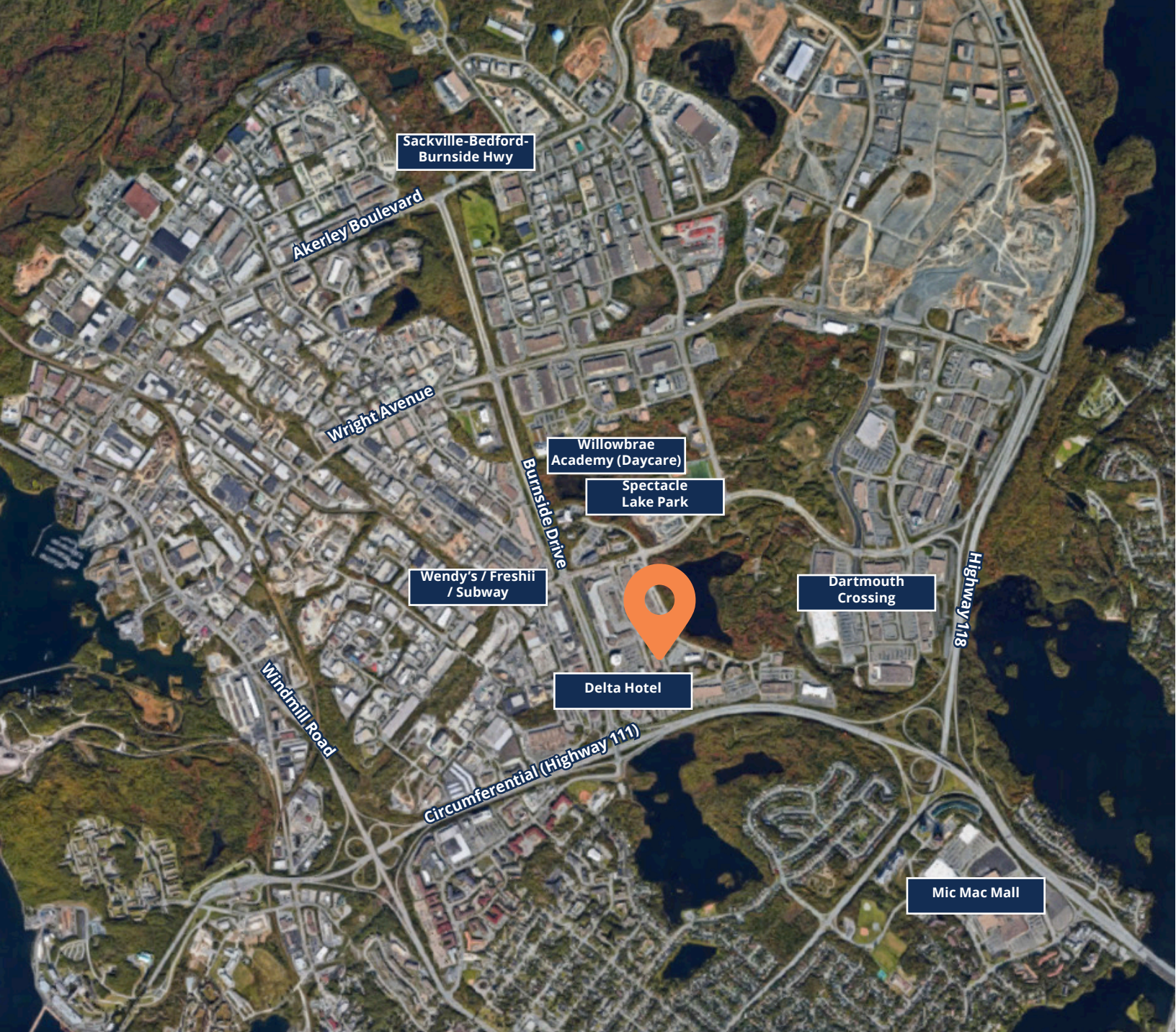


SUITE 215, PARK PLACE III | 237 BROWNLOW AVENUE, DARTMOUTH, NS

Floor Plan







Geof Ralph

- 📞 (902) 444-4004
- 📠 (902) 877-9324
- ✉️ geof@partnersglobal.com

partnersglobal.com

Partners Global Corporate Real Estate (Partners Global) and its agents and affiliates do not warrant, represent or guarantee the accuracy, completeness or validity of the information provided herein. Parties interested in the property are to conduct their own independent investigations to determine the suitability of the property for their intended use and are strongly urged to discuss the property with their professional advisors. Partners Global expressly disclaims any liability arising out of any errors and omissions in the information. Prospective clients should not confine themselves to the contents but should make their own enquiries to satisfy themselves in all respects. Partners Global will not accept any responsibility should any details prove to be incomplete or incorrect.

