

FOR LEASE

# THE ANTHONY, 5426 PORTLAND PLACE NORTH END HALIFAX

Ground level commercial space for  
lease in Halifax's trendy north end

**TENANT  
INCENTIVE**

**ONE YEAR FREE NET  
RENT TO QUALIFIED  
TENANTS**

**Geof Ralph**

☎ (902) 444-4004

📠 (902) 877-9324

✉ [geof@partnersglobal.com](mailto:geof@partnersglobal.com)

[partnersglobal.com](http://partnersglobal.com)

 **PARTNERS GLOBAL**  
CORPORATE REAL ESTATE

## Ground level commercial space for lease in Halifax's trendy north end

Welcome to The Anthony - a premium Class 'A' mixed-use building nestled between Gottingen Street and Brunswick Street in the rejuvenated North End. Now offering an enticing tenant incentive - one year of free net rent for qualified tenants - this exceptional opportunity is not to be missed!

This +/- 2,600 sq. ft. ground-floor space features a private entrance and expansive storefront windows, positioned below 125 luxury residential units. With versatile potential, this location is well-suited for a restaurant, a health and wellness venue, or a boutique office for a professional firm.

The surrounding area is thriving, with The North End Business Association representing over 350 diverse businesses, from unique boutique shops to inviting eateries and bars, offering a diverse and vibrant commercial landscape. Join the unique blend of emerging and established retailers, dining venues, and beverage spots that shape the character of North End Halifax!



Tenant Incentives

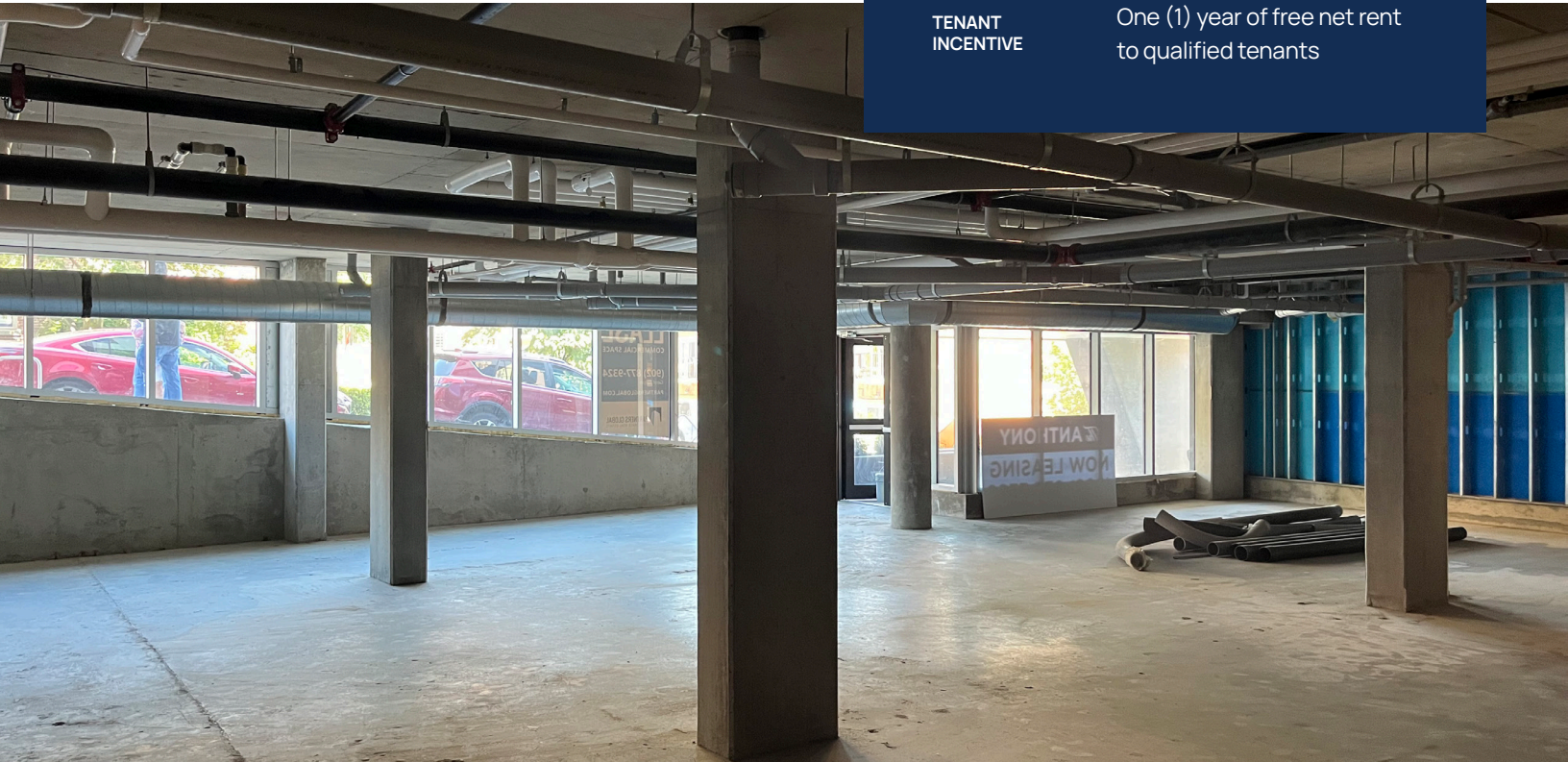


Trendy, Central Location



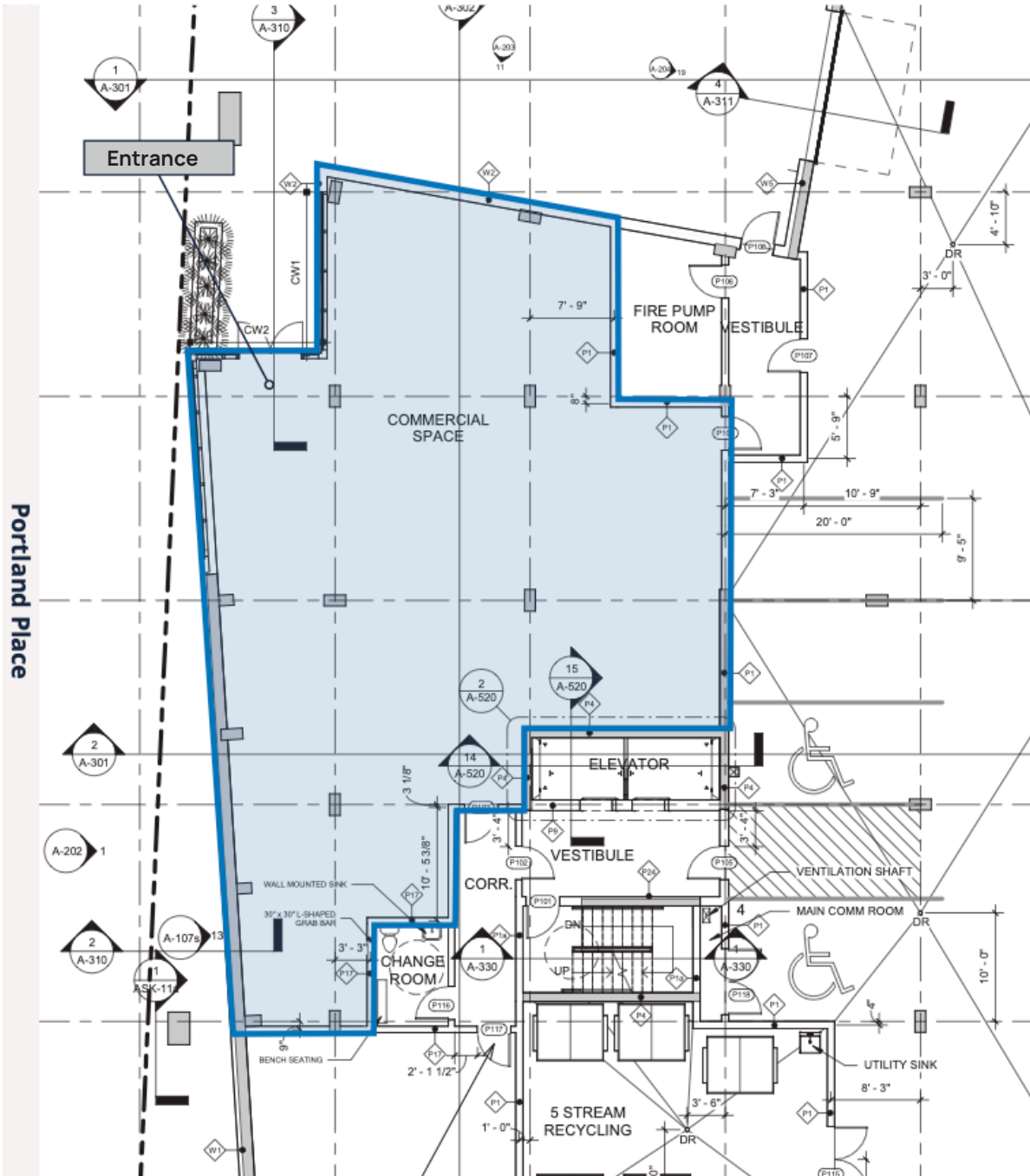
Paid Parking Available

LISTING ID	10195
ADDRESS	The Anthony, 5429 Portland Place
LOCATION	North End Halifax
PROPERTY TYPE	Multi-storey mixed-use building with street level commercial and 125 residential units above
SIZE AVAILABLE	+/- 2,600 sq. ft.
FLOOR LOCATION	Lobby level
AVAILABILITY	Immediately for tenant fit-up
PARKING	Underground tenant parking available (paid) and surrounding municipal street parking
NET RENT	By negotiation (call a listing agent for details)
ADDITIONAL RENT	\$10.00 psf (plus utilities)
TENANT INCENTIVE	One (1) year of free net rent to qualified tenants



# Floor Plan

+/- 2,600 sq. ft.



# Location Overview

## North End Halifax: Embrace vibrancy, ignite creativity, and explore endless possibilities

Situated at the cusp of the city's downtown, North End Halifax stands a vibrant and rapidly revitalizing neighborhood. Brimming with culture and creativity, this area is home to charming cafes, award-winning restaurants, trendy brewpubs, renowned bakeries, chic boutiques, welcoming fitness and yoga studios, and picturesque saltbox houses. Conveniently positioned, downtown Halifax is just a brief walk away, providing locals the opportunity to enjoy all the amenities it has to offer without the hassle of parking.

The area has witnessed substantial growth over the past decade and displays a continued momentum with no signs of slowing down, with over 1,000 new residential units approved or under construction. Uncover why North End Halifax is the city's best-kept secret for local and small organizations and join the thriving community of over 350 businesses in the North End Business Association that proudly call this dynamic area their home.

Source: North End Business Association





Class 'A' mixed-use commercial property

Enticing tenant incentives available

Proximity to vibrant downtown Halifax

Raw space ready for tenant customization

Amenity rich area

Underground, on-site parking available

Exterior signage opportunities

Professionally managed property

Ample natural light





Partners Global Corporate Real Estate (Partners Global) and its agents and affiliates do not warrant, represent or guarantee the accuracy, completeness or validity of the information provided herein. Parties interested in the property are to conduct their own independent investigations to determine the suitability of the property for their intended use and are strongly urged to discuss the property with their professional advisors. Partners Global expressly disclaims any liability arising out of any errors and omissions in the information. Prospective clients should not confine themselves to the contents but should make their own enquiries to satisfy themselves in all respects. Partners Global will not accept any responsibility should any details prove to be incomplete or incorrect.

## Geof Ralph

- ☎ (902) 444-4004
- 📠 (902) 877-9324
- ✉ geof@partnersglobal.com

[partnersglobal.com](https://partnersglobal.com)

