

FOR LEASE

WOODLAWN PLAZA

114 WOODLAWN ROAD, DARTMOUTH, NS

Exceptional end-cap retail space
situated within a busy shopping plaza



Rod Winters

☎ (902) 444-4004
📱 (902) 223-5781
✉ rod@partnersglobal.com

Matt Ross

☎ (902) 444-4004
📱 (902) 324-1101
✉ matt@partnersglobal.com

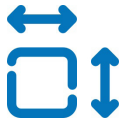
partnersglobal.com



Exceptional end-cap retail space situated within a busy shopping plaza

Located within the bustling Woodlawn Plaza in Dartmouth, this premier leasing opportunity presents an adaptable and bright retail space. Spanning 6,784 sq. ft., the space offers flexibility for prospective tenants, with the option to lease the full area or a smaller portions of the space. The space can easily be demised into two to three smaller units, to meet tenant's specific needs. The open-plan layout features expansive storefront windows, allowing for an abundance of natural light, complemented by high ceilings. Tucked at the back, you will find five private offices, a compact kitchen area, and a boardroom, with warehouse space and a grade loading door.

Positioned in the heart of Dartmouth, this well-established shopping centre offers exceptional visibility, prominent signage opportunities, ample on-site parking, and convenient access to multiple public transit routes. The property is professionally managed and anchored by national tenants such as Staples, Giant Tiger, and Bulk Barn, ensuring a steady flow of foot traffic and a prime location for business growth.



1,728 - 6,784 sq. ft. Available



High Vehicular Area



Free, On-site Parking

LISTING ID	10419
ADDRESS	114 Woodlawn Road, Dartmouth
PROPERTY TYPE	Retail
BUILDING NAME	Woodlawn Plaza
BUILDING SIZE	158,058 sq. ft.
SIZES AVAILABLE	1,728 sq. ft. - 6,784 sq. ft.
FLOOR LOCATION	Ground level
AVAILABILITY	Immediately
LOADING	One (1) grade door
PARKING	Ample, free on-site parking
BASE RENT	By negotiation (contact the listing agents)
ADDITIONAL RENT	\$10.51 psf (2025)



Site Plan

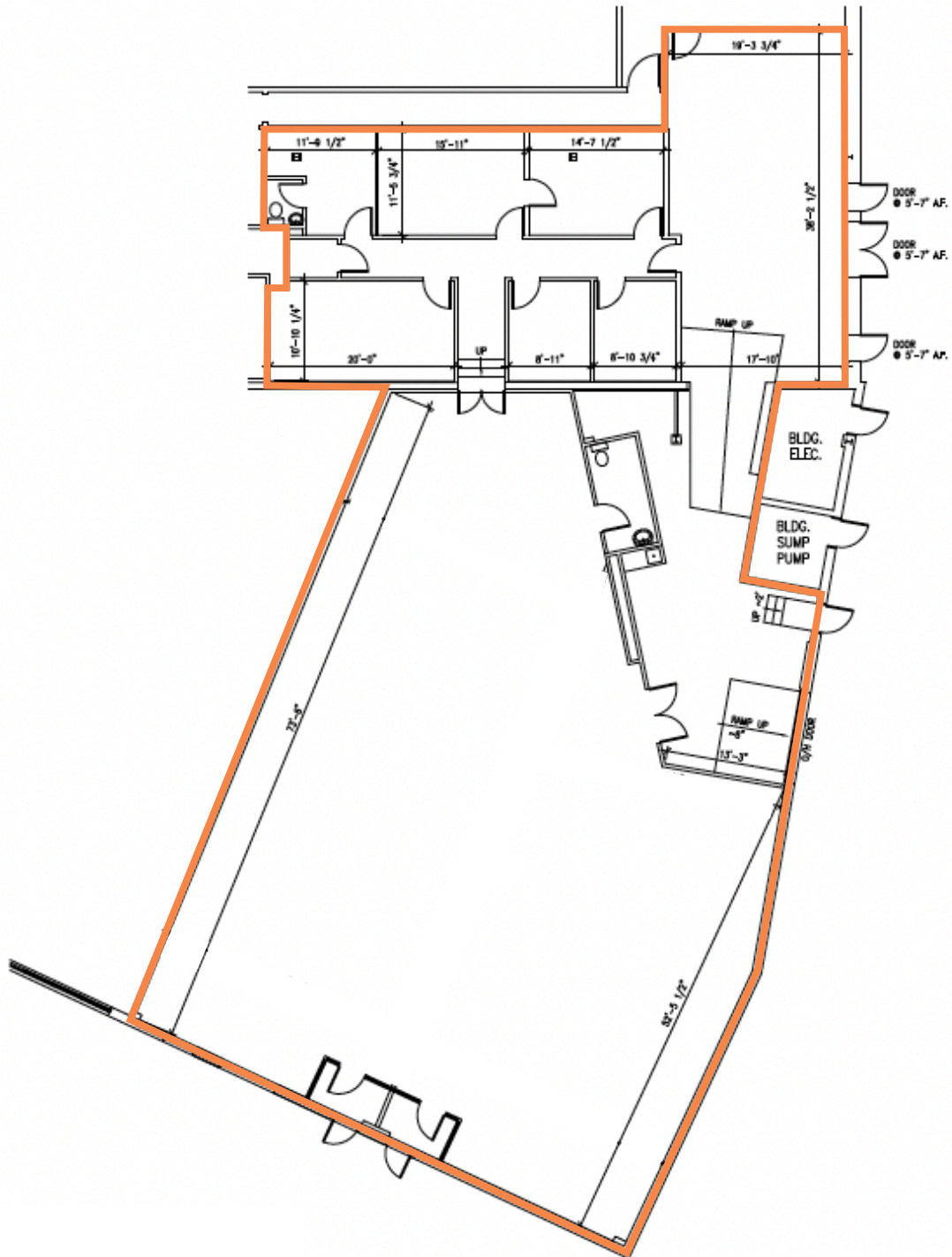
Woodlawn Plaza, Dartmouth



 Subject Premises

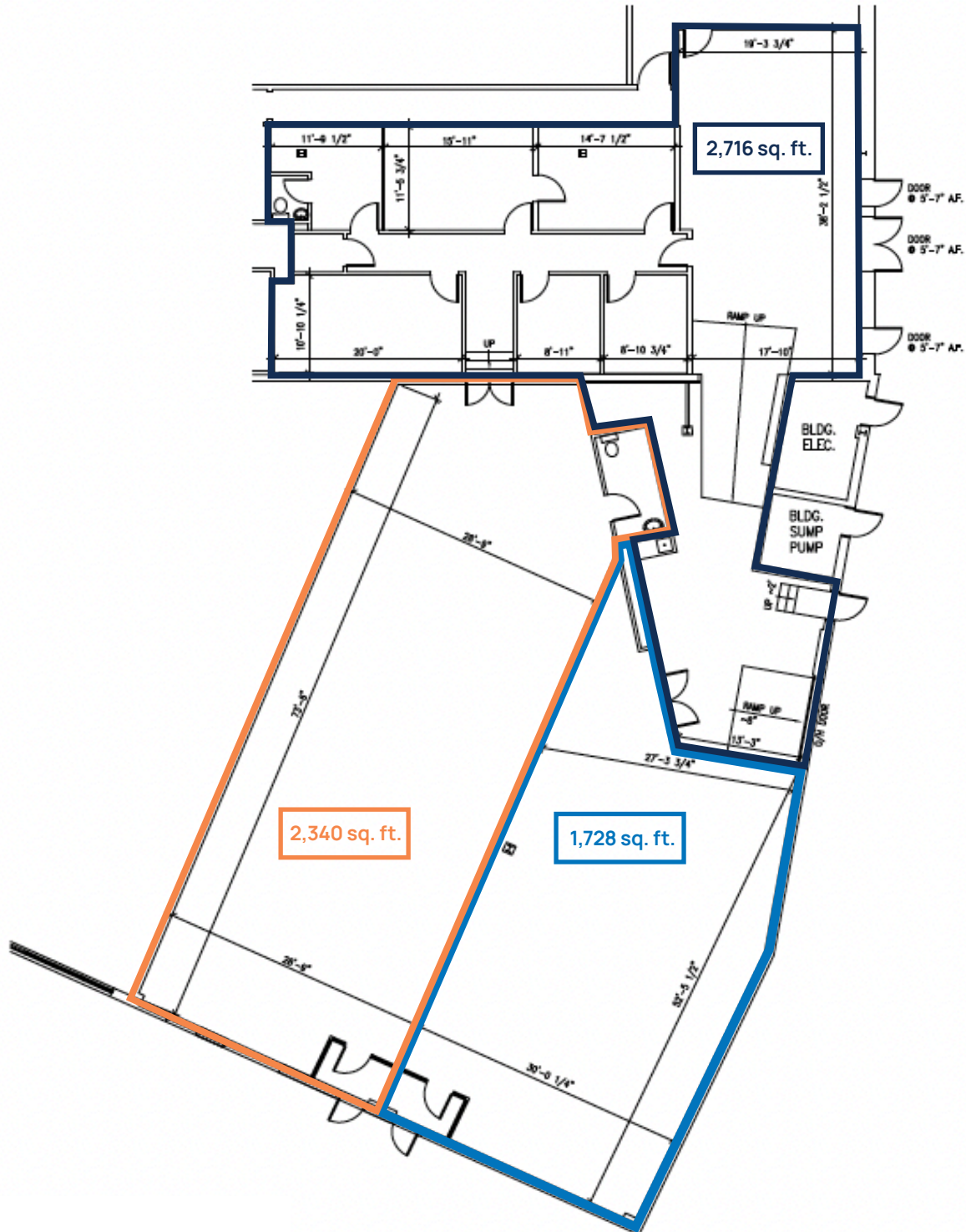
Floor Plan

6,784 sq. ft.



Demising Potential

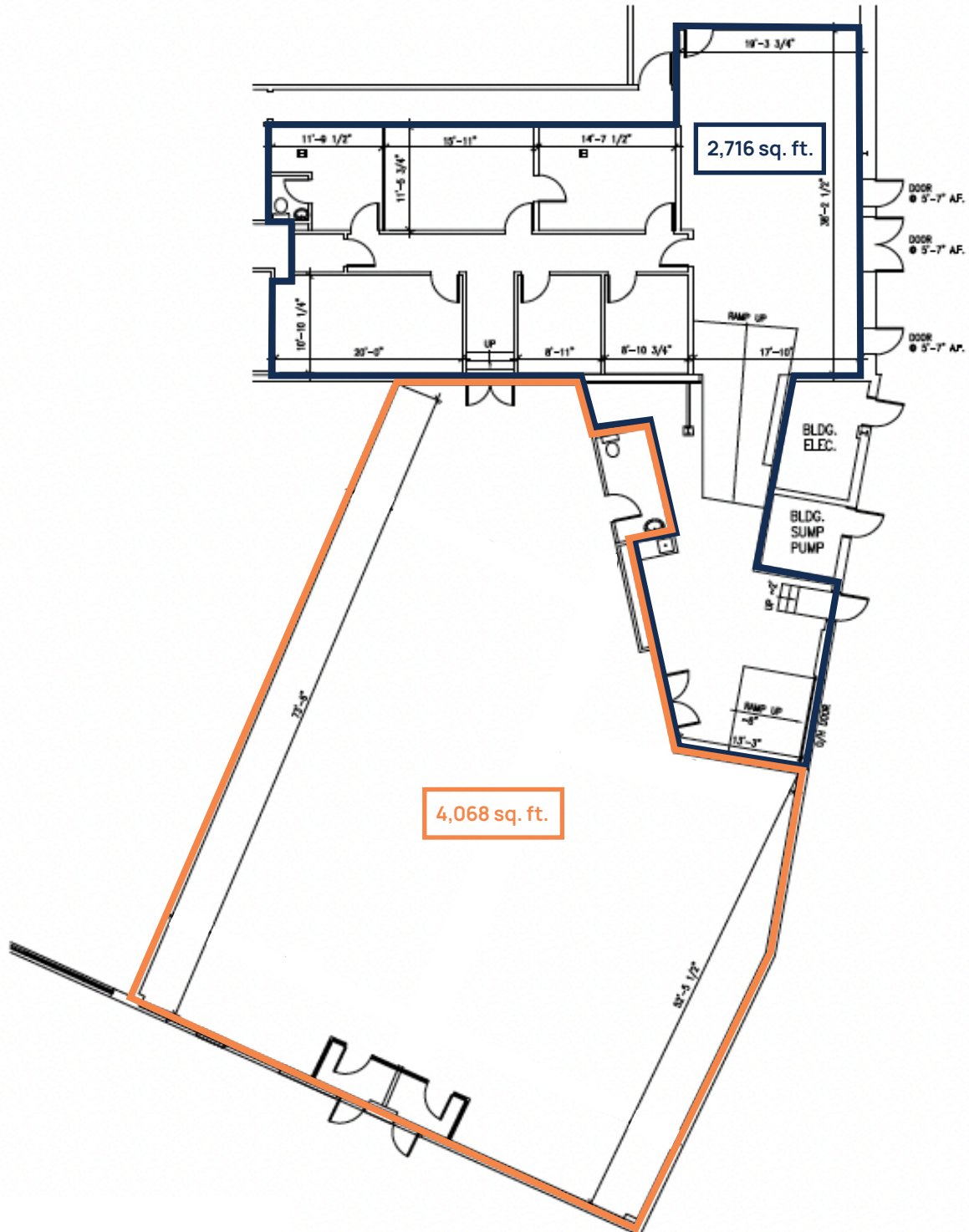
1,728 sq. ft. - 2,716 sq. ft.



Space can be configured in various ways to meet tenant's specific requirements and needs

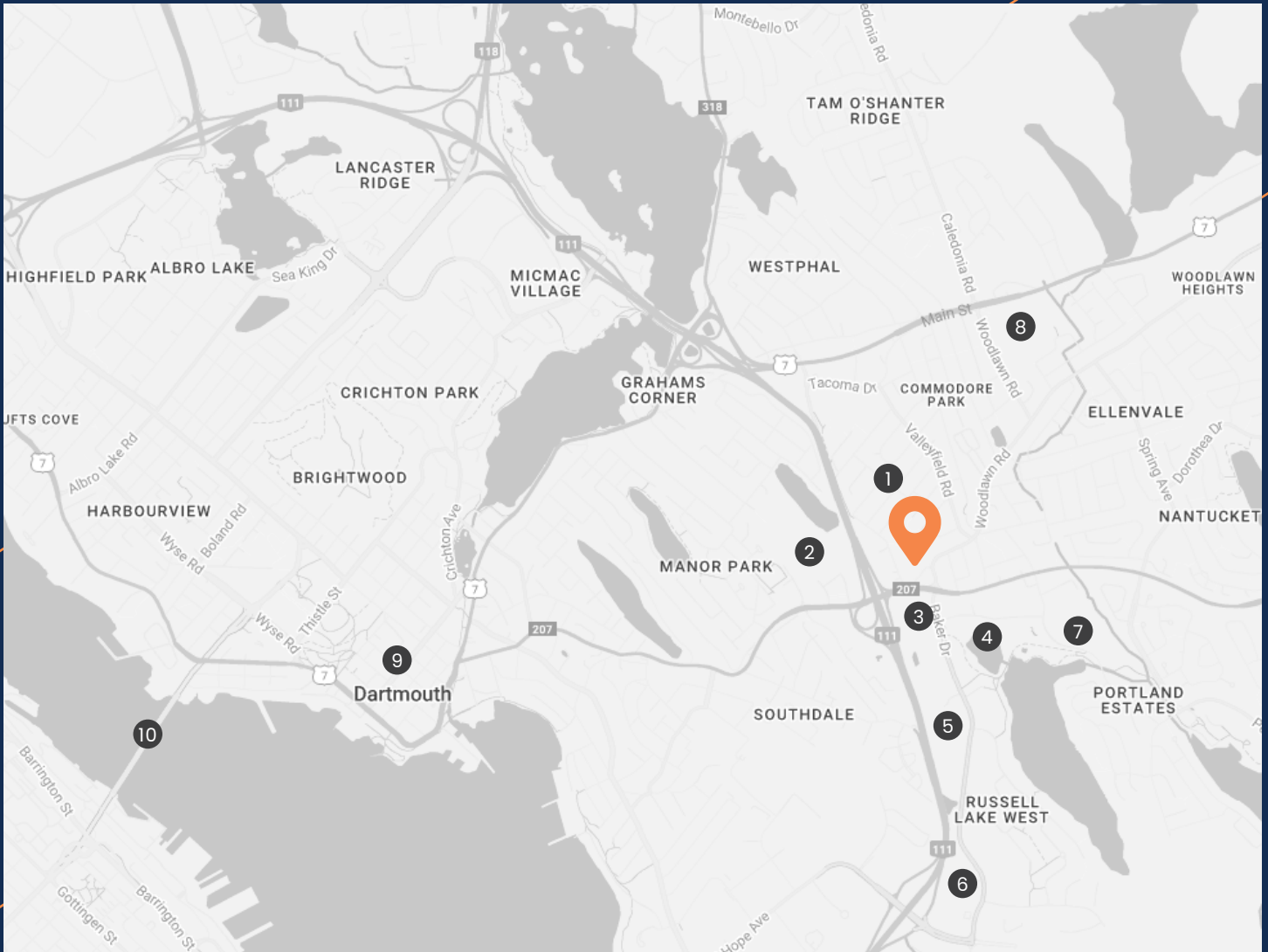
Demising Potential

2,716 sq. ft. - 4,068 sq. ft.



Space can be configured in various ways to meet tenant's specific requirements and needs

Surrounding Amenities



- ① Woodlawn Park
- ② Penhorn Plaza
- ③ McDonald's
- ④ Portland Lakes Trail
- ⑤ Parkland At The Lakes (Seniors Residents)
- ⑥ Access Nova Scotia
- ⑦ Woodlawn Public Library
- ⑧ NSCC - Akerley Campus
- ⑨ Downtown Dartmouth
- ⑩ Angus L. MacDonald Bridge

Nova Scotia Highway 111
DRIVE TIME: 2 MINUTES

Downtown Dartmouth
DRIVE TIME: 7-10 MINUTES

Cole Harbour
DRIVE TIME: 8-12 MINUTES

Downtown Halifax
DRIVE TIME: 16-24 MINUTES



OPEN SPACE



BOARDROOM



AERIAL VIEW



EXTERIOR



OPEN SPACE



Rod Winters

- ☎ (902) 444-4004
- 📠 (902) 223-5781
- ✉ rod@partnersglobal.com



Matt Ross

- ☎ (902) 444-4004
- 📠 (902) 324-1101
- ✉ matt@partnersglobal.com

Partners Global Corporate Real Estate (Partners Global) and its agents and affiliates do not warrant, represent or guarantee the accuracy, completeness or validity of the information provided herein. Parties interested in the property are to conduct their own independent investigations to determine the suitability of the property for their intended use and are strongly urged to discuss the property with their professional advisors. Partners Global expressly disclaims any liability arising out of any errors and omissions in the information. Prospective clients should not confine themselves to the contents but should make their own enquiries to satisfy themselves in all respects. Partners Global will not accept any responsibility should any details prove to be incomplete or incorrect.



PARTNERS GLOBAL
CORPORATE REAL ESTATE